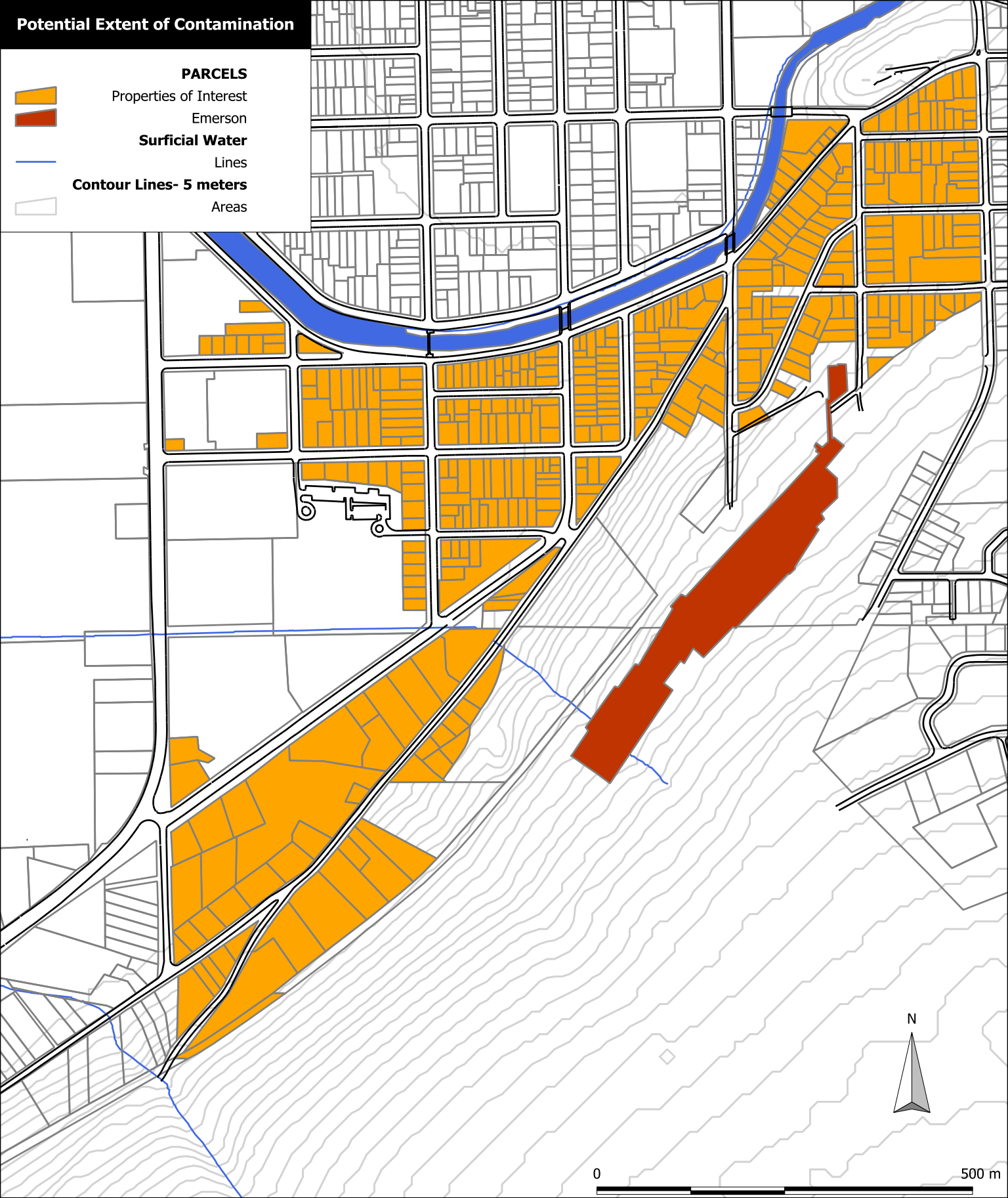


Potential Extent of Contamination

- PARCELS**
 - Properties of Interest
 - Emerson
- Surficial Water**
 - Lines
- Contour Lines- 5 meters**
 - Areas



area of interest

BEE 672 / EAS 471
TCE Project
Appendix B
Map 4

Universal Transverse Mercator - Zone 18
Lon: 76°30.163' W
Lat: 42°25.856' N
Printed at: 5/12/2006